



Surface protection films are specially manufactured to avoid damages to the product such as scratches, abrasion etc.

The speciality of this film is that it leaves no residue on removal from the surface.

Our protective films are engineered to protect wide range of substrates like glossy or matt plastic sheets, glass sheets, metal surface, carpets and decorative laminates(sun mica).

A circular inset image showing several rolls of surface protection film in various colors: blue, white, and green. The rolls are arranged in a group, with some standing upright and others lying flat. The background of the inset is a blurred image of a blue surface, possibly a carpet or a piece of plastic.

Surface Protection
Films

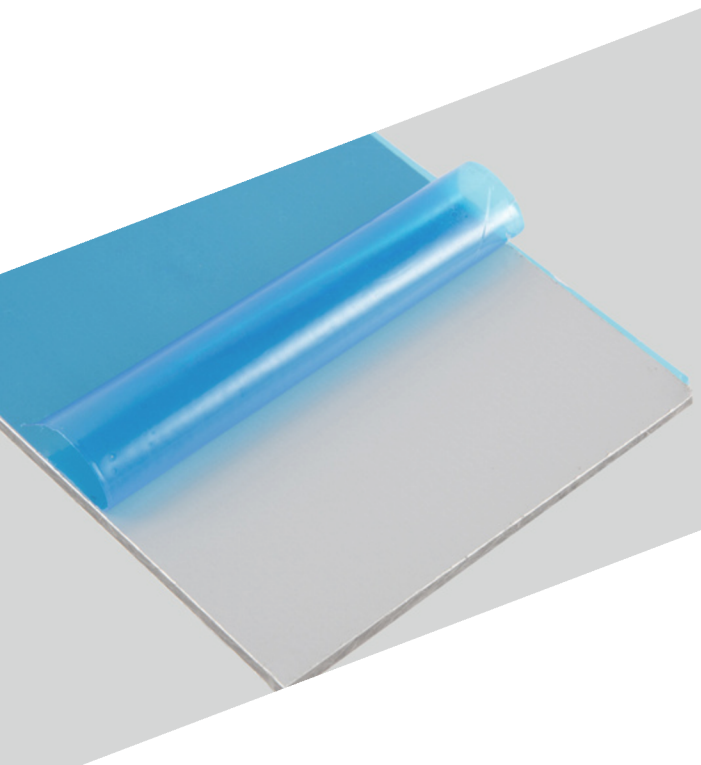
Application Areas:

- Glass & UPVC
- Marble / Granite
- Color Coated Steel
- Flooring & Carpeting
- Electronic Appliances
- Automobile Lamp Assembly
- Decorative Laminated Sheets

Salient Features:

- Easy Peel off
- Wrinkle and crease free
- Can be printed up to 2 colors
- Does not damage the masked surface
- Environment friendly and 100% recyclable
- Transparent and Customized color available
- Leaves no trace of glue residue on protected substrate

- **Available width** - 25mm up to 1500mm
- **Available Thickness** - 25 Microns to 100 Microns
- **Available length** - 100mtrs to 200mtrs / roll
- **Available Color** - Transparent, Opaque in any color
- **Core id** - 32mm ; 50mm ; 76mm



Regd. Office & Works



H1-48(B),49 & 49(A) , RIICO Industrial Area, Gegal, N.H 8,
Ajmer(Rajasthan) INDIA 305023



+91 94615 55644



jyotipolymers@yahoo.com



www.jyotipolymers.com